

# Douche à main

Douche à main corps, yeux et visage.  
Avec support mural plastique.

Avec dispositif de régulation automatique de la pression  
et du débit assurant un cône de douche régulier.

**Article No:** 822 3657

Débit: 8 l/min  
Pression: 2,4-7 bar  
Raccord: DN 15, tuyau PVC 1.5 m

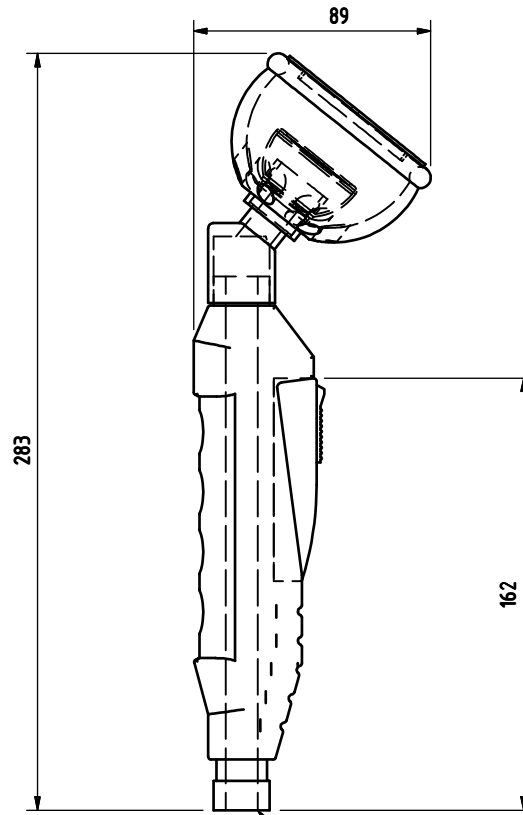
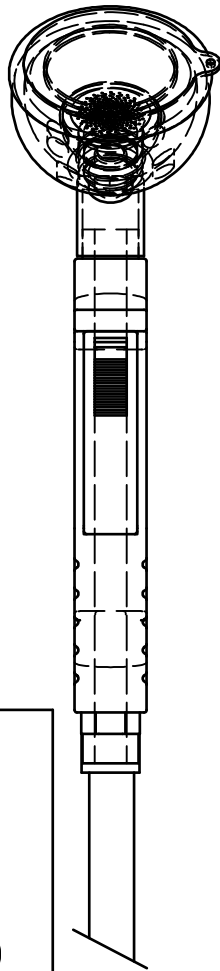
Fixation: Crochet plastique  
Douche yeux: 1 buses ABS avec protection.  
Commande par poignée plastique.

Livré avec panneaux avec pictogramme universel.

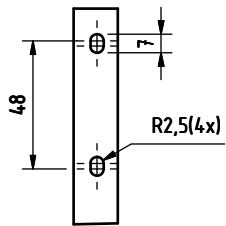


 **GIA Premix**

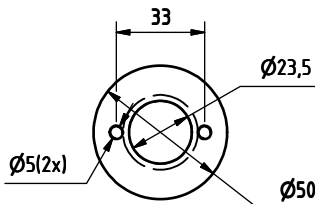
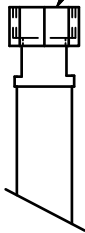
Repr. en Suisse: LaboSafe SA / 2000 Neuchâtel  
[www.labosafe.ch](http://www.labosafe.ch) | [info@labosafe.ch](mailto:info@labosafe.ch)  
Tel.: +41 32 756 96 96



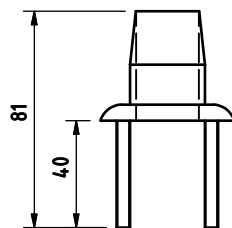
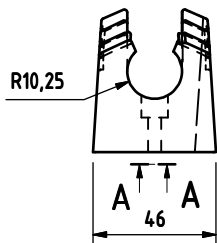
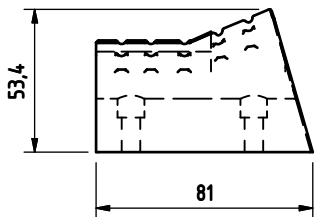
A ( 1 : 2 )




Anslutning DN15



Anslutning DN15



This drawing must not without our permission be copied, imparted to third party or otherwise unauthorizedly used. Contravention will be prosecuted. Denna ritning får ej utan vårt medgivande kopieras, delgivas annan eller eljest obehörigen användas. Överträdelse beivras med stöd av gällande lag.

Ant. A	Det.-nr	Dimension/Benämning	Material/Ritn.nr/Art nr	Anm.		
Ritningen MAKULERAS efter avslutat projekt		Proj. nr.	Datum	Sign.	Beräknad vikt	Vägd vikt
Konstr.	Ritad	Konstr.	Godk.	Skala	Ersätter	Ersatt av
 <b>GIA handdusch</b> DN15, 8 l/min vägg eller bänkmontage, 1,5m slang				Filnamn <b>8223657</b>	Dat. <b>2011-05-16</b>	
				Ritn.-nr <b>8223657</b>		

Box 59, S-772 22 Gröngesberg, Sweden

Nr	Ant.	Ändring och/eller medd.-nr	Datum	Inf.	Godk.
----	------	----------------------------	-------	------	-------